

Weigh price labeller WPL-S

Flexibility and maximum performance in weigh labelling



! Benefits

- Multifunction machine
- Hygienic design
- Multiple software and hardware options
- Modular design



The new manual weigh price labeller is configured to suit your individual requirements following the highest hygienic standards and offering multiple software modules to be able to label, track your production line and much more.

The weigh price labeller WPL-S for product quality and food safety

- ! **One machine does all** (average weight, catch weight, ERP/traceability, recipe etc.)
- ! Equipped with BarTender® label design, ProRecipe XT®, production system, additional printers or floor scales that will offer you the **comprehensive solution** you were expecting.
- ! Highly configurable **hygienic design** in full stainless steel construction that allows thorough cleaning without any food traps. Made for all areas.
- ! Its modular design allows **quick exchange** of components minimising downtime.

The right solution for all of these applications:



Weighing



Filling and dosing



Formulation



Statistics



Statistical process control



Labelling

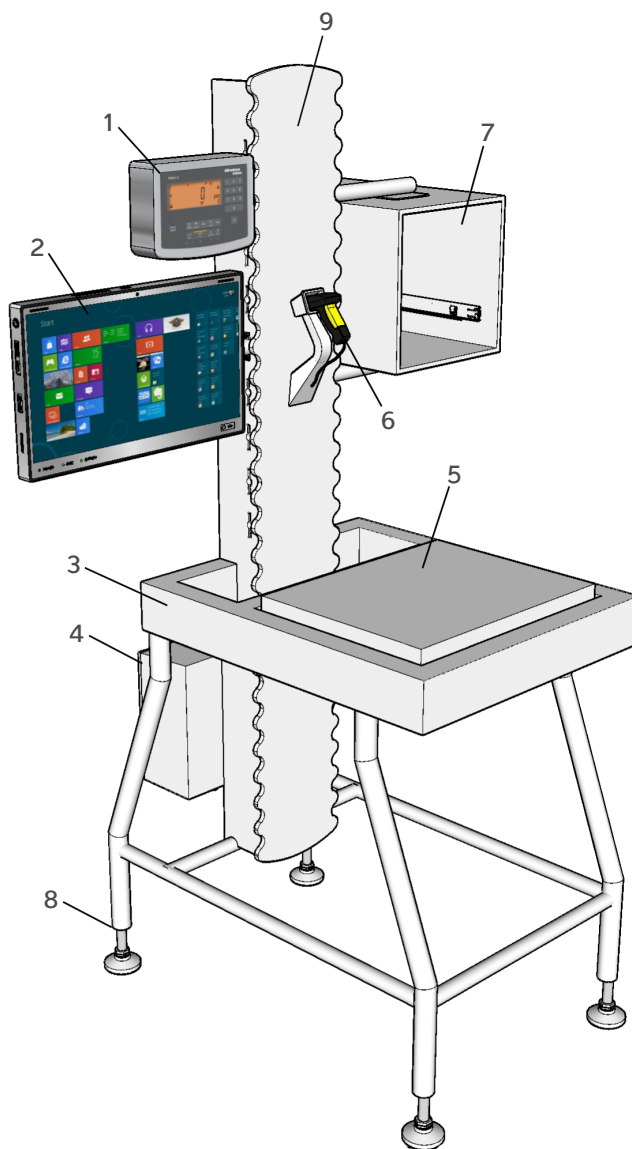
Hygienic, versatile, reliable

The weigh price labeller WPL-S is the ideal labelling solution for any challenge you face and the new standard for a variety of purposes, which include:

- Calculation of price based on weight
- Calculation of best by date based on product, packaging, fresh or frozen
- Calculation of cooking time based on product, size and weight

Weigh price labeller WPL-S is highly configurable and you can choose from a wide variety of components (different screen sizes, printers, scales, scanners, indicators and endless software possibilities).

Machine construction



- 1 Scale indicator
- 2 Colour touchscreen HMI
- 3 Frame
- 4 Sealed electrical box
- 5 Platform
- 6 Barcode reader
- 7 Garage for label printer
- 8 Adjustable feet
- 9 Hygienically open central column for label runs

Technical specifications

Weigh price labeller WPL-S

The weigh price labeller WPL-S stand has been hygienically designed for wash-down applications. Built in stainless steel, its open structure avoids food traps and allows the machine to dry fast.

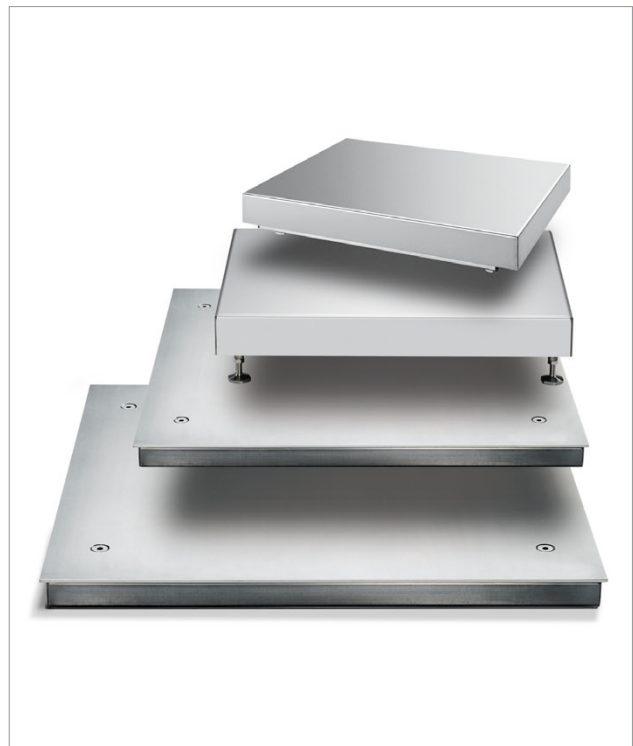
The weigh price labeller WPL-S platforms offer precision and versatility. Equipped with one or four high resolution strain-gauges (depending on model), and in combination with the scale indicators Combics® ensuring a long life and problem-free operation.

Weighing system construction

Stand options	<p>IP Rate: IP54 to IP69K</p> <ul style="list-style-type: none"> - Steel: Standard AISI 304 stainless steel. Optional AISI 316. Bead blasted or electro polished options - Printer options: platform or garage. Second printer and garage possible with standard and wide format - Separate third printer using wall or table mounted garage - Scanner: Various mounting options, hardwired and wireless - Platform: Second bulk floor platform or track scale using additional indicator on same stand - Legs: Standard adjustable legs. Optional wheels - Level indicator: High or medium
Platform options	<p>Premium and economy ranges available</p> <p>Standard AISI 304 stainless steel. Optional AISI 316 and galvanised</p> <ul style="list-style-type: none"> - 15 kg × 5 g – 320 × 240 mm - 30 kg × 10 g – 400 × 300 mm – 500 × 400 mm - 60 kg × 20 g – 500 × 400 mm – 650 × 500 mm* <p>All above listed at 3000e LCE</p> <p>All above listed available as dual range 2 × 3000e with NCE</p> <p>* Painted steel frame</p>
Scale indicators options	<p>For more options see Combics® datasheet</p> <p>Premium and economy ranges available.</p> <p>Combics® 2, Stainless steel IP69K including RS232, Ethernet, TCP/IP, Alibi memory</p>
Electrical supply	<p>For more options see Combics® datasheet</p> <p>Main supply 220V 50Hz AC/120V 60 Hz AC</p> <p>Standard lockable mains isolator on cabinet side</p>
Operating temperature range [°C]	+5°C to +40°C



Second bulk floor platform option



Combics® platforms are available in different sizes



Combics® 2 scale indicator

Honeywell printer

The printers can perform **direct thermal printing** on special heat-sensitive media or **thermal transfer printing** on special ink-coated ribbon. They can use transfer ribbon rolls with the ink-coated side facing either outwards or inwards.

Thermal printing is the perfect choice when the labels are used in controlled environments and simple applications where the products have a short lifespan, while **thermal transfer printing** will last longer, and is less vulnerable to external influences such as sunlight, chemicals, abrasion, and environments with high humidity. It also withstands very high temperatures, and can also be used in a wide range of receiving face materials.

Honeywell printer options

Honeywell PM42	<p>Max/min label width 114/19 mm. 5.000-15.000 prints per day</p> <p>Print size and resolution:</p> <ul style="list-style-type: none"> - Width: 203 dpi (108 mm), 300 dpi (106 mm), 406 dpi (104 mm) - Length: 203 dpi (4.8 m), 406 dpi (1.2 m) <p>RoHS compliant</p> <p>Technology: Direct thermal</p> <p>Environment: Working temperature: 5-40°C; Air humidity: 20-80%</p> <p>All metal, die-cast aluminium construction</p> <p>Magnetic quick-mount print head</p> <p>Standards: FCC, CE, RoHS, S Mark, CB, RCM, KC, CRS, EAC, SASO, NRCS & SABS, NOM</p> <p>Options: Integral self-strip unit with liner takeup, label taken sensor (LTS), internal rewinder, parallel interface board, cutter</p>
Honeywell PM43c	<p>Max/min label width 114/19 mm</p> <p>Print size and resolution:</p> <ul style="list-style-type: none"> - Width: 203 dpi (108 mm), 300 dpi (106 mm), 406 dpi (104 mm) - Length: 203 dpi (4.8 m), 406 dpi (1.2 m) <p>Technology: Direct thermal and thermal transfer label</p> <p>Environment: Working temperature: 5-40°C; Air humidity: 20-80%</p> <p>Standards: FCC, UL, CSA, CCC, CE, RoHS, D Mark</p> <p>Options: Integral self-strip unit with liner takeup, Label Taken Sensor (LTS), media low sensor, media supply hub, RFID UHF, collapsible ribbon and liner core, cutter, linerless</p>
Honeywell PX6i/PX6ie	<p>Max/min label width 170/76 mm.</p> <p>Print size and resolution:</p> <ul style="list-style-type: none"> - Width: 167.4 mm - Length: 203 dpi (4095 mm), 300 dpi (2775 mm), 406 dpi (1016 mm) <p>Technology: Direct thermal and thermal transfer label</p> <p>Environment: Working temperature 5 to 40°C; Air humidity 10 to 90%</p> <p>All metal for 24/7 harsh industrial environment</p> <p>Standards: FCC, UL, CE, C-Tick</p> <p>Options: RFID, integral self-strip unit with liner takeup, Label Taken Sensor (LTS), Compact Flash (CF) memory, cutter, label low sensor, label rewind mechanism</p>



Honeywell PM42



Honeywell PM43c



Honeywell PX6ie

Bar code scanners

Datalogic USB	5v via USB, no PSU required (buccaneer connection for simple exchange)
Datalogic RS232	External PSU required
Datalogic wireless	Includes base unit, cable & PSU
RS232	Separate power supply
Options	Scanner cradle (plastic surface mounted) Keyboard layout west



Bar code scanner

Industrial PC

IPC	10" Display Windows Pro – External PSU 17" S17 normal aspect (1280x1024) Windows Pro – internal PSU (IP69k front, IP67 rear, buccaneer connectors, fully enclosed stainless steel housing) 22" S22 wide aspect (1920x1080) Windows Pro – internal PSU (IP69K front, IP67 rear, buccaneer connectors, fully enclosed stainless steel housing)
Mounting options	OCM integral VESA bracket Vesa desktop mount S17 & S22 Vesa wall mount S17 & S22



Industrial PC, front

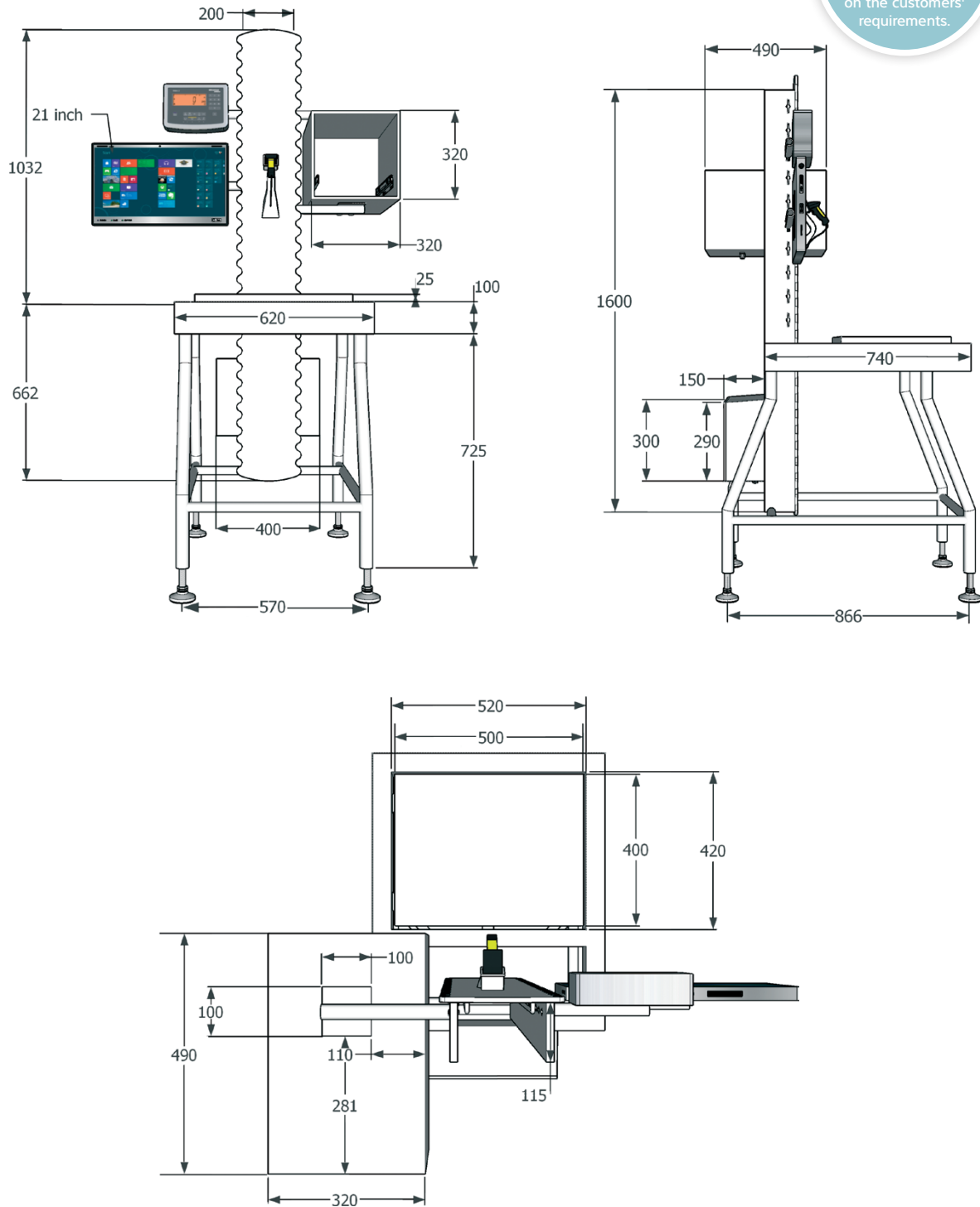


Industrial PC, back

Technical diagrams

Weigh price labeller WPL-S

All figures on this drawing are a configuration example. The measurements may vary depending on the customers' requirements.



Software

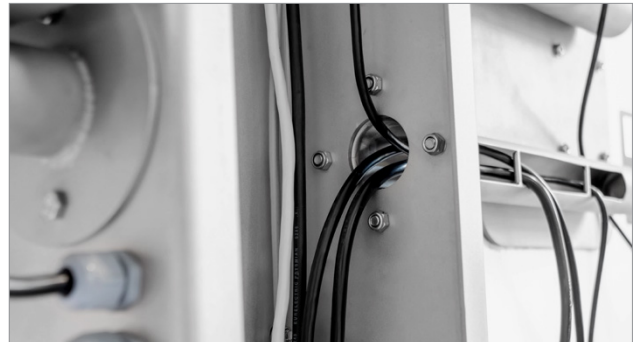
Labelling	
Label design	BarTender® 2 printer licence
Weigh labelling	Weigh price labelling module
Reports	Seal open source report designer
Options	Labelling software Nucleus link and migration package Emydex interface Software ProRecipe XT®
ERP / traceability / production systems	
Factory system components	Dynamic dispatch (Entry level traceability system) POP (Purchase Order Processing) Batch cutting Stock control SOP (Sales Order Processing) Dispatch Invoicing and post to accounts Routing and proof of delivery
Minebea Intec	Software for statistical process control (See SPC@Enterprise datasheet)
Other	
Operating system	Windows based software
Import of products	Automatic import from SQL database possible
Communication protocols	Ethernet OPC-UA
Languages	Multilingual – on request

Electronics

Dedicated fully sealed electrical box
Din rail mounted switch 10/100 standard
Din rail mounted switch 10/100/1000 option
All cables end to end terminated, no junctions or mid-cable terminations
Pre-moulded factory made network and power cables
All cables glanded through steelwork to stop water ingress
Open cable runs forcing water, moisture and debris to the floor
Pig tails to hold the cables on place



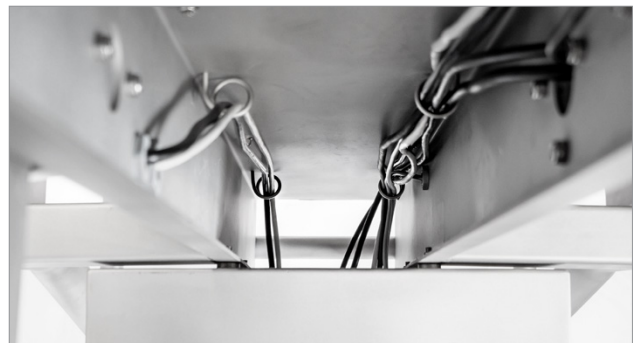
Fully sealed electrical box



Open cable runs



Glanded cable



Pig tails

Approvals and certificates

Factory Trade Approved 3000e and 2x3000e (BCE, NCE).
Alibi Memory 130,000 Entries
SQL Software Weights and Measures table
Full transaction traceability and audit trail

Service and warranty

Local support

Customers can choose from a range of service levels – each tailored to their individual requirements.
Please contact your local Minebea Intec representative.

The products and solutions presented in this data sheet make major contributions in the following sector:



Food
and beverages

The technical data given serves as a product description only and should not be understood as guaranteed properties in the legal sense.

Specifications subject to change without notice.
Rev. 11/2020

Minebea Intec UK Ltd.
2670 Kings Court,
The Crescent
Birmingham Business Park,
B37 7YE
United Kingdom
Phone +44.121.779.3131
cs.uk@minebea-intec.com
www.minebea-intec.com

